

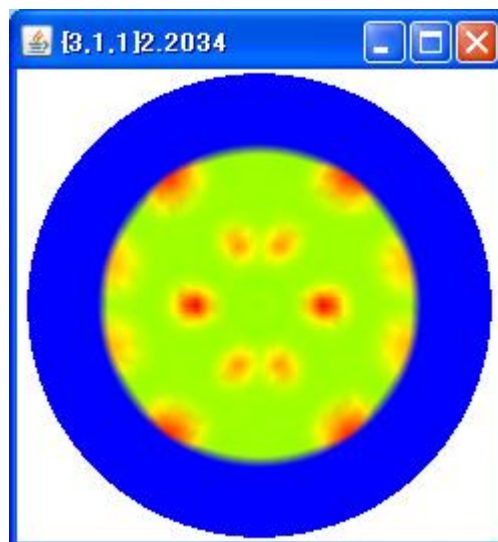
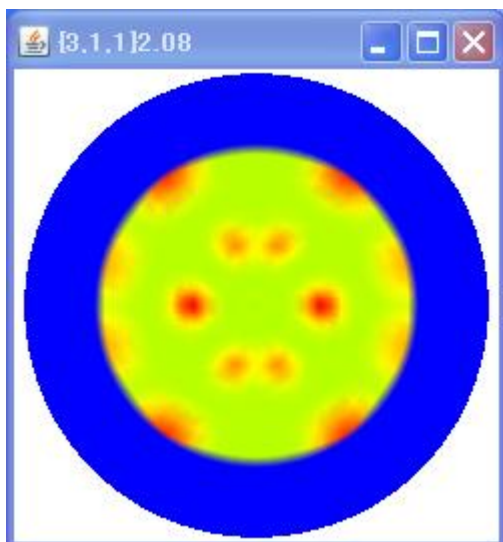
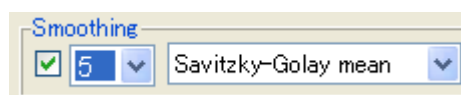
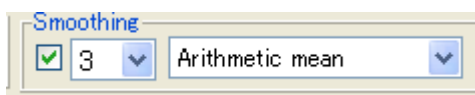
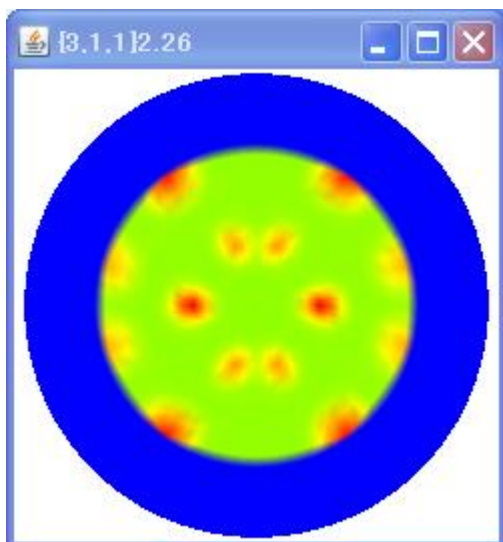
単純移動平均と適合化移動平均比較

2011年01月01日

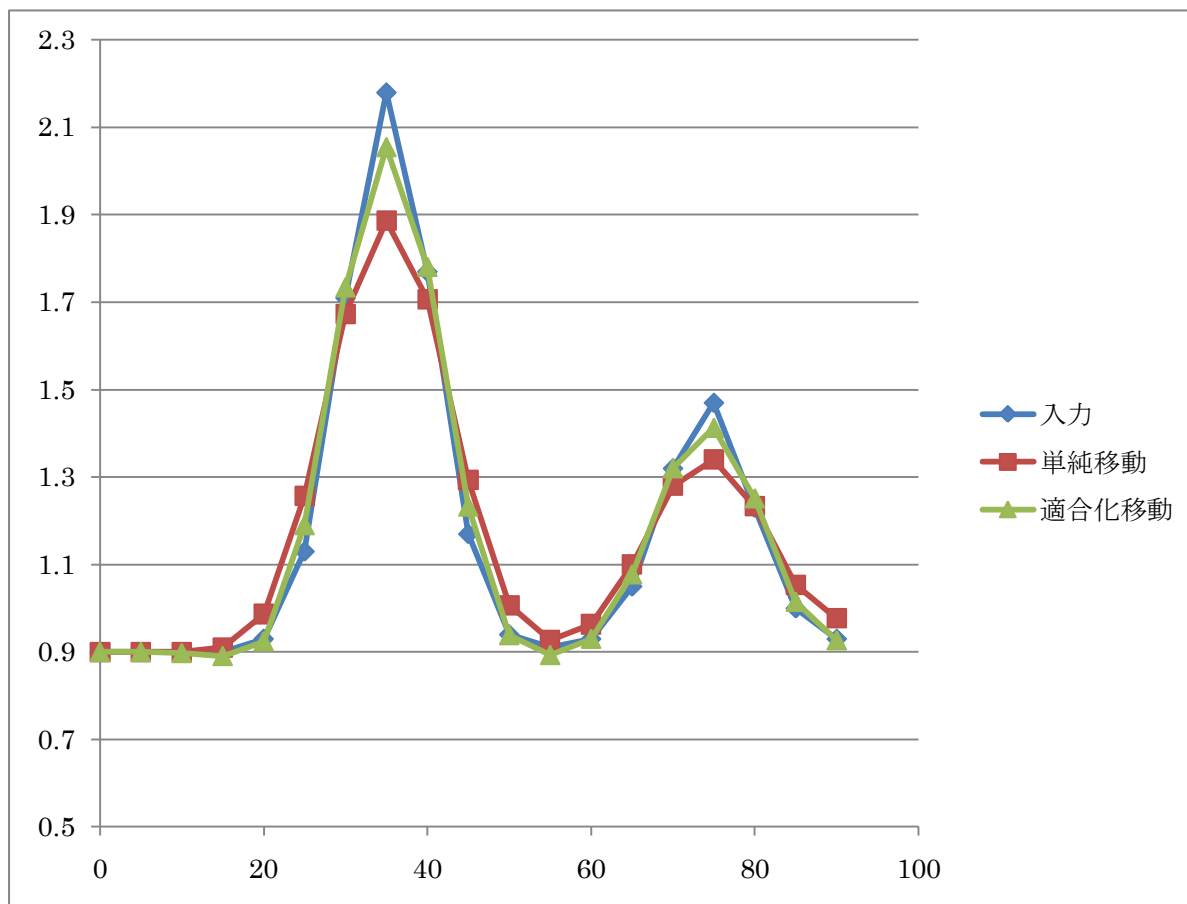
helperTex

入力データ

LaboTexでbrass方位の極点図を作成し、 α start 25.0とした



入力	単純移動	適合化移動
0	0.9	0.9
5	0.9	0.9
10	0.9	0.9
15	0.9	0.91
20	0.93	0.9867
25	1.13	1.2567
30	1.71	1.6733
35	2.18	1.8867
40	1.77	1.7067
45	1.17	1.2933
50	0.94	1.0067
55	0.91	0.9267
60	0.93	0.9633
65	1.05	1.1
70	1.32	1.28
75	1.47	1.34
80	1.23	1.2333
85	1	1.0533
90	0.93	0.9767



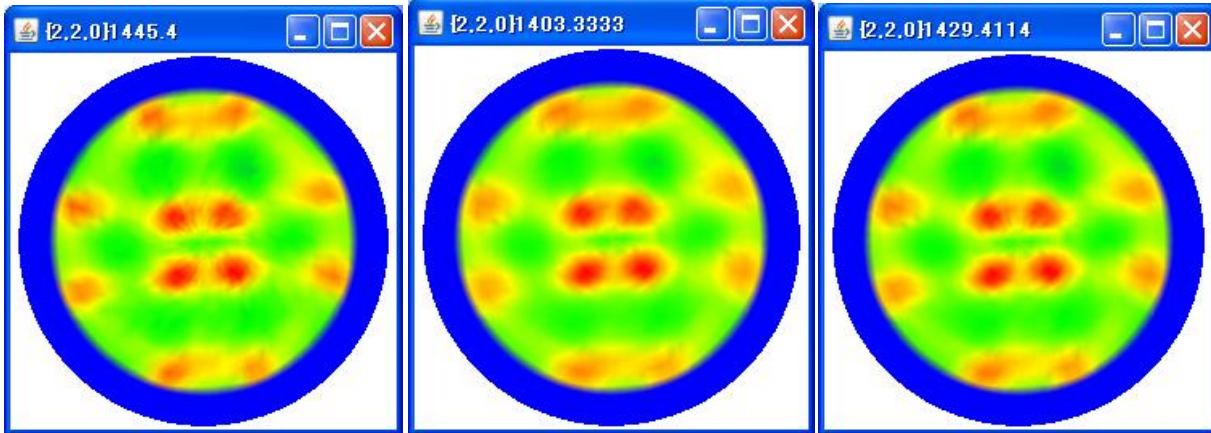
A 1 の実測値

3points Arithmetic

5points Savitzky-Golay

Smoothing
 3 Arithmetic mean

Smoothing
 5 Savitzky-Golay mean



$\alpha = 2.5$

